

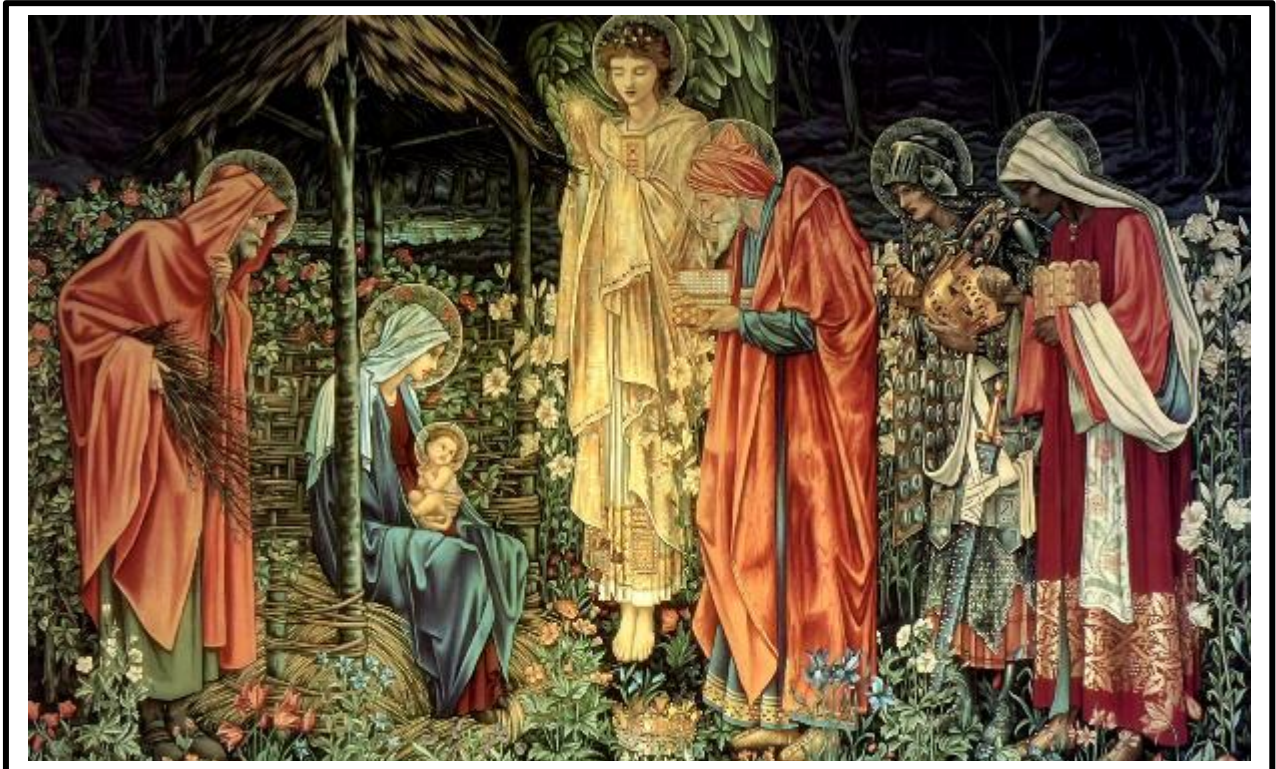


**The Uniting Church in Australia  
Warwick - Killarney  
Uniting Parish**



**Sunday 18<sup>th</sup> January 2026**

*Welcome to worship on this second Sunday after Epiphany  
May God bless us today as we join online or in the pew.  
Please stay to share a chat and cuppa afterwards.*



**Your Gifts Matter — Join the Parish Council!**

Do you have skills in IT, property, communication, or governance?  
Are you passionate about helping our parish thrive?

We're inviting new members to join our Parish Council — a team committed to guiding and supporting the life of our church. Whether you're tech-savvy, have a heart for pastoral care and prayer, are a great communicator, handy with property matters, or experienced in leadership, your contribution could make a real difference.

If you feel called to serve or want to learn more, please speak with Rev Ansie.  
Together, let's build a vibrant and faithful future.

*Please note that expressions of interest and/or nominations are requested on or before the end of January. Forms will be available in the foyer and in the office.*

## Worship Services

### Sunday 18<sup>th</sup> January

- 8:30am Killarney
- 9:30am Warwick



### Sunday 25<sup>th</sup> January

- 8:30am Killarney
- 9:30am Warwick HC

## Readings

### Sunday 18<sup>th</sup> January

Isaiah 49: 1 - 7  
Psalm 40: 1 - 11  
1 Corinthians 1: 1 - 9  
John 1: 29 - 42

### Sunday 25<sup>th</sup> January

Isaiah 9: 1 - 4  
Psalm 27: 1,4- 9  
1 Corinthians 1: 10 - 18  
Matt 4: 12 - 25



A two-bedroom unit at Uniting Place Warwick will become available for rent from the end of January.

All enquiries should go to Regional Housing Limited - Ph: 1300 642 123

Or contact the church office - Tues – Friday – 9am – 2pm

## ANNUAL PARISH MEETING AT KILLARNEY

**Sunday 15<sup>th</sup> Feb - 2pm**

Come and be informed about our journey through 2025 and our plans for 2026

## Market Day

Saturday 7<sup>th</sup> March

Books, Trash & Treasure + our usual big favourites

Planning meeting 5<sup>th</sup> Feb -11:30am

Do you know of anyone who is grieving the loss of a loved one?

There is a **Grief and Loss** - 8 week program starting here on Wednesday 11 Feb – 5pm – 7pm

Leave your contact details with Callum in the office.

## Prayer of the day

Holy God, our strength and our redeemer, by your Spirit hold us forever, that through your grace we may worship you and faithfully serve you, follow you and joyfully find you, through Jesus Christ, our Savior and Lord.

## **Reflection...:** John 1: 29-42

We are in the season of Epiphany, a time when God's light shines, or God's revelation comes. So, we will read in these next few weeks of people who see God's plans revealed, and who share them with others. John's Gospel today explains that John the Baptist has baptized Jesus, and he now knows that Jesus is the Messiah. He saw God's Holy Spirit come upon Jesus, as he rose up from the water.

Several days later, John says to two of his disciples, "Look, here is the Lamb of God, who takes away the sin of the world." At once, his disciples followed Jesus. Jesus asks them, "What are you looking for?" They reply with a question, "Rabbi where are you staying?" The reply is that wonderful invitation, "Come and see!" Whenever we have a question of Jesus, we are invited, "Come and see!"

In the first few weeks of a New Year, what a blessing to realize that Jesus is inviting each one of us to explore this year with our Saviour, "Come and see!" One of these two disciples was Andrew, Simon Peter's brother. Andrew invites Simon along, with these words, "We have found the Messiah!" He brought Simon to Jesus, who looks at him and says, "You are Simon, son of John. You are to be called Cephas" (which is translated Peter.)

What a meeting! And what a journey of discovery, hope, joy, love and despair is ahead for these first disciples. Chosen by Jesus, these are a group of ordinary people, who are blessed to be a blessing for the world. Blessings, May.



Held in Warwick UC  
on the second  
Wednesday of the  
month. 4pm

Welcome back in 2026

**Parish Council meeting -**  
Thursday 29<sup>th</sup> January - 7pm.

Did you know:

The term Epiphany refers to the revelation of Jesus to the world, primarily through the visit of the Magi as the first manifestation of Christ to the Gentiles, his baptism and his first miracle at Cana.

### **BIRTHDAY GREETINGS**

Tom Bryant - 20 Jan  
Marli Read - 20 Jan  
Ann-Maree Clarke - 21 Jan  
Ian Hancock - 21 Jan  
Merle Baguley - 23 Jan  
John Morris - 24 Jan

PSST - someone's turning 90....

## Care Corner

- ❖ In need of prayer, contact our Prayer Net Co-Ordinator Dianne Cahill. All requests are confidential. 0427 000 887
- ❖ Give thanks for the special senior members of our Parish. Especially Tom Bryant who celebrates his 90<sup>th</sup> birthday and Ivan Hancock his 93<sup>rd</sup> birthday. May it be a memorable day for both of you.
- ❖ Pray for school families as they prepare for their children returning to the classroom. For many this is a challenging and expensive time of year.
- ❖ Willow Tree 37 welcomes stationery and other school needs for all ages from preschool to high school. Basic clothing is also appreciated as are lunch boxes and water bottles.
- ❖ Give thanks for the emergency services First Responders, Rural Fire Brigade and SES.

## What's Happening

19<sup>th</sup> January - 25<sup>th</sup> January

*Hospitality next week: - Group 4*

*Flowers today – Alison Baistow*

**Monday 19<sup>th</sup> Jan**

**Rev Ansie's day off**

**Tuesday 20<sup>th</sup> Jan**

10am – 2pm WillowTree37

**Wednesday 21<sup>st</sup> Jan**

1pm – 4pm Indoor Bowls

**Thursday 22<sup>nd</sup> Jan**

10am - 2pm WillowTree 37

**Friday 23<sup>rd</sup> Jan**

9:00 – 11:30 Courtyard Coffee

*Flowers 25<sup>th</sup> Jan – Marg Adcock*



### WILLOWTREE 37

Open Tuesdays and  
Thursdays

10am – 2pm

Please let Sue Campbell know if you'd like to join our floral ministry with providing flowers in the church.



Using our Bank Acct for direct deposit: Uniting Church Warwick/Killarney  
Westpac BSB: 034 226 Acc:141717

*Please mark deposits, offerings or donations*

*Or use our QR link to donate online. We are grateful for every gift.*



SCAN ME!

**Minister:** Rev Ansie Liebenberg

**E:** [minister@wkuc.org.au](mailto:minister@wkuc.org.au) Ph.0481 713 761

**Office:** Phone 4661 1080

**Email address:** [office@wkuc.org.au](mailto:office@wkuc.org.au)

Box 436 Warwick Qld 4370

**Web:** <http://wkuc.org.au>

[Facebook Page](#)

[Facebook Group page](#)

[Link to our YouTube channel for live Worship recorded for viewing any time.](#)